

FANUCCI CATALOG

WHERE STYLE MEETS THE WORLD



Call
(010) 109 7869

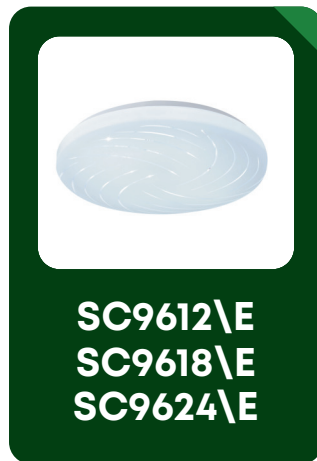
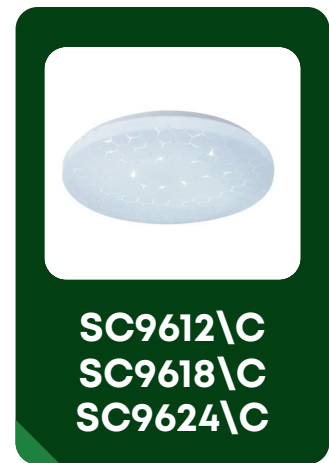
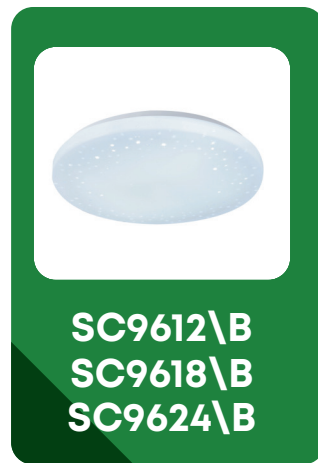


Email
info@fanucci.co.za

20
26



LED CEILING LAMP



Specifications:

- Models: SC9612/ABCDEF | SC9618/ABCDEF | SC9624/ABCDEF
- Wattage: 12W / 18W / 24W (high-efficiency LED)
- Material: High-grade plastic shade with a durable metal base
- Light Source: Integrated long-life LED (maintenance-free)
- Color Temperature: 6500K cool white (Ra \geq 80)
- Suitable for space:
 - SC9612/A, B, C, D, E, F: 5–10 m²
 - SC9618/A, B, C, D, E, F: 8–15 m²
 - SC9624/A, B, C, D, E, F: 12–20 m²
- Recommended Applications: Bedroom | Study | Corridor | Kitchen | Living Area

Email  info@fanucci.co.za



LED CEILING LAMP

Specifications:



SC2068-1

- Material: High-transmittance acrylic shade + iron body with premium white finish
- Wattage & Lumens: 53W | 5300 lm
- Light Source: 6500K cool white, Ra \geq 80
- Suitable for space: 8–20 m²



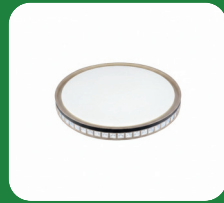
SC2078-1

- Material: High-transmittance acrylic shade + iron body with premium white finish
- Wattage & Lumens: 30W | 3000 lm
- Light Source: 6500K cool white, Ra \geq 80
- Suitable for space: 8–20 m²



SC015A-4

- Material: High-transmittance acrylic shade + iron body with powder-coated finish
- Wattage & Lumens: 40W | 4000 lm
- Light Source: 6500K cool white, Ra \geq 80
- Suitable for space: 10–22 m²



SC015A-5

- Material: High-transmittance acrylic shade + iron body with powder-coated finish
- Wattage & Lumens: 50W | 5000 lm
- Light Source: 6500K cool white, Ra \geq 80
- Suitable for space: 10–22 m²



LED CEILING LAMP

SC5225-C



Email  info@fanucci.co.za



LED CEILING LAMP

Specifications:



SC2088-1

- Material: High-transmittance acrylic shade + iron body with premium white finish
- Wattage & Lumens: 30W | 3000 lm
- Light Source: 6500K cool white, Ra \geq 80
- Suitable for space: 8–25 m²



SC6140-A

- Material: Premium opal acrylic diffuser + durable powder-coated steel body
- Wattage & Lumens: 50W | 4500 lm
- Lighting Mode: On-wall switch selectable between 6500K (Cool White) and 3000K (Warm White)
- Suitable for space: 12–18 m²



SC5224-C

- Material: High-transmittance curved acrylic shade + powder-coated iron body
- Wattage & Lumens: 40W | 4000 lm
- Lighting Mode: Switchable via wall switch between 6500K (Cool White) and 3000K (Warm White)
- Suitable for space: 10–15 m²



SC5225-C

- Material: High-transmittance curved acrylic shade + powder-coated iron body
- Wattage & Lumens: 50W | 5000 lm
- Lighting Modes:
 - 6500K – Cool White (high focus / productivity)
 - 3000K – Warm White (relaxation / evening)
 - 4000K – Neutral (natural daylight / general use)
- Suitable for space: 15–22 m²



LED CEILING LAMP

SC9563-4



Email  info@fanucci.co.za



LED CEILING LAMP

Specifications:



- Material: High-quality cold-rolled steel with durable powder-coated white finish
- Light Source: Integrated long-life SMD LED chips
- CCT: Switchable (dual-CCT) via integrated driver
- CRI: >80



- Material: High-quality cold-rolled steel with durable powder-coated white finish
- Light Source: Integrated long-life SMD LED chips
- CCT: Switchable (dual-CCT) via integrated driver
- CRI: >80



- Material: Durable UV-stabilised plastic base (white finish)
- Decorative Elements: Faceted plastic crystal components for light refraction
- Cover: Clear glass protective cover for durability and easy cleaning
- Light Source: Integrated high-efficacy SMD LED chips (non-replaceable)



- Material: Heavy-gauge cold-rolled steel with durable powder-coated white finish
- Diffuser: High-transmittance engineered polymer for uniform light distribution
- Light Source: Integrated high-efficacy SMD LED array (long-life, non-replaceable)
- Functionality: Selectable White with dimming – independent adjustment of colour temperature and brightness



LED CEILING LAMP

SC1013-G



Email  info@fanucci.co.za



CEILING LAMP

Specifications:



SC1013-G

- Type: Multi-globe ceiling bar lamp – circular configuration
- Configuration: Three globes arranged in a classic circular pattern
- Material: High-quality steel body
- Lampholder: E14 (SES) ceramic lampholders



SC1013-S

- Type: Multi-globe ceiling bar lamp – linear configuration
- Configuration: Three globes in a straight line
- Material: High-quality steel body
- Lampholder: E14 (SES) ceramic lampholders



SC1014-S

- Type: Multi-globe ceiling bar lamp – linear configuration
- Configuration: Four globes in a straight line for broader illumination
- Material: High-quality steel body
- Lampholder: E14 (SES) ceramic lampholders



LED CEILING LAMP

SC1013-G



Email  info@fanucci.co.za



CEILING LAMP

Specifications:



SC6963-2

- Type: Linear bar ceiling lamp – 2-light configuration
- Material: High-quality steel body with satin chrome finish
- Lampholder: 2 × E14 (SES) ceramic lampholders
- Light Source: Accepts user-supplied LED or CFL globes (E14 base)
- Mounting: Direct surface mount to ceiling junction box (hardware included)
- Recommended Applications: Small kitchens | Hallways | Entryways | Powder rooms



SC6963-4

- Type: Linear bar ceiling lamp – 4-light configuration
- Material: High-quality steel body with satin chrome finish
- Lampholder: 4 × E14 (SES) ceramic lampholders
- Light Source: Accepts user-supplied LED or CFL globes (E14 base)
- Mounting: Direct surface mount to ceiling junction box (hardware included)
- Recommended Applications: Kitchen islands | Dining areas | Bedrooms | Home offices



SC6963-6

- Type: Linear bar ceiling lamp – 6-light configuration
- Material: High-quality steel body with satin chrome finish
- Lampholder: 6 × E14 (SES) ceramic lampholders
- Light Source: Accepts user-supplied LED or CFL globes (E14 base)
- Mounting: Direct surface mount to ceiling junction box (hardware included)
- Recommended Applications: Large living rooms | Open-plan spaces | Boardrooms | Restaurants



LED CEILING LAMP

SC9921-1 & SC2503-1

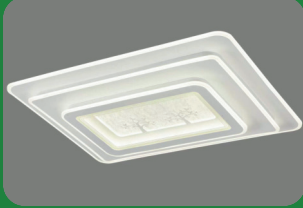


Email  info@fanucci.co.za



LED CEILING LAMP

Specifications:



SC2503-1

- Type: Three-tier flush mount LED ceiling light with decorative laser-cut pattern
- Design: Layered square frames in white and silver metal with a precision laser-cut “Tree of Life” centre panel
- Material: Multi-layered metal construction (white and silver finish)
- Diffuser: Frosted acrylic outer layer for soft light distribution
- Light Source: Integrated SMD LED board (non-replaceable)



SC9921-1

- Type: Tunable white LED ceiling mount with floating ring accent – square
- Design: Crisp square floating ring that frames the central light source for an architectural, angular aesthetic
- Housing Material: Heavy-gauge cold-rolled steel with durable powder-coated white finish
- Diffuser: High-transmittance engineered opal polymer for uniform light distribution
- Light Source: Integrated high-efficacy SMD LED array (long-life, non-replaceable)
- CCT Control: Continuous tunable white from 3000K (warm) to 6500K (cool)



SC9922-1

- Type: Tunable white LED ceiling mount with floating ring accent – round
- Design: Soft circular floating ring that introduces a curved, organic feel; square base with round accent creates dynamic visual interest
- Housing Material: Heavy-gauge cold-rolled steel with durable powder-coated white finish
- Diffuser: High-transmittance engineered opal polymer for uniform light distribution
- Light Source: Integrated high-efficacy SMD LED array (long-life, non-replaceable)
- CCT Control: Continuous tunable white from 3000K (warm) to 6500K (cool)



LED CEILING LAMP

SC2339-8



Email  info@fanucci.co.za



LED CEILING LAMP

Specifications:



SC2339-6

- Type: Smart Bluetooth LED ceiling light with Starlight effect diffuser
- Diameter: Approximately 400 mm
- Typical Wattage: 36W – 48W (integrated high-efficacy LED)
- Diffuser: Premium acrylic with “Starlight” effect – tiny pin-dot transparent dots creating a sparkling night-sky appearance
- Material: High-quality steel or aluminium with durable powder-coated white finish
- Functionality: Built-in Bluetooth entertainment system; stepless dimming via remote control and mobile app
- CRI: >80
- Input Voltage: 220-240V AC, 50/60Hz
- Recommended Applications: Standard bedrooms, studies, smaller living spaces



SC2339-8

- Type: Smart Bluetooth LED ceiling light with Starlight effect diffuser
- Diameter: Approximately 500 mm
- Typical Wattage: 60W – 72W (integrated high-efficacy LED)
- Diffuser: Premium acrylic with “Starlight” effect – tiny pin-dot transparent dots creating a sparkling night-sky appearance
- Material: High-quality steel or aluminium with durable powder-coated white finish
- Functionality: Built-in Bluetooth entertainment system; stepless dimming via remote control and mobile app
- CRI: >80
- Input Voltage: 220-240V AC, 50/60Hz
- Recommended Applications: Master bedrooms, open-plan lounges, larger areas requiring higher light output

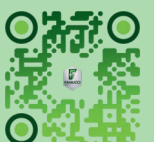


DOWN LIGHTS

Specifications:



- Type: Multi-mode recessed LED downlight with integrated blue accent ring
- Trim Ring: Integrated blue LED accent ring behind clear/opal cover
- Light Source (Primary): Integrated high-efficacy SMD LED (cool white)
- Light Source (Accent): Integrated single-colour blue LED ring
- Functionality: Three distinct operating modes via standard wall switch cycling
- Mounting: Recessed mounting with spring clips; suitable for plasterboard and suspended ceilings
- Input Voltage: 220-240V AC, 50/60Hz
- Recommended Applications: Architectural accent lighting, living areas, corridors, contemporary interiors



LED CEILING LAMP

8001-5233Y



Email  info@fanucci.co.za



PENDANT LIGHT

Specifications:



- Type: Decorative single pendant with black smoked glass
- Material: High-quality steel or iron construction with durable plated finish (chrome & matte black)
- Glass: Black smoked glass shade for soft, ambient light output
- Lampholder: 1 × E27 (ES) ceramic lampholder
- Suspension: Adjustable cord/rod (length adjustable at installation)
- Canopy: Matching finish metal canopy included
- Input Voltage: 220-240V AC, 50/60Hz
- Recommended Applications: Entryways, kitchen islands (clustered), bedside, standalone feature



- Type: Decorative dual-light linear pendant with black smoked glass
- Material: High-quality steel or iron construction with durable plated finish (chrome & matte black)
- Glass: Two black smoked glass shades for coordinated ambient lighting
- Lampholder: 2 × E27 (ES) ceramic lampholders
- Suspension: Adjustable cord/rod on a sleek linear bar
- Canopy: Matching finish metal canopy included
- Input Voltage: 220-240V AC, 50/60Hz
- Recommended Applications: Kitchen islands, dining tables, and elongated surfaces requiring balanced illumination



- Type: Decorative three-light linear pendant with black smoked glass
- Material: High-quality steel or iron construction with durable plated finish (chrome & matte black)
- Glass: Three black smoked glass shades for enhanced visual impact
- Lampholder: 3 × E27 (ES) ceramic lampholders
- Suspension: Adjustable cord/rod on an extended linear bar
- Canopy: Matching finish metal canopy included
- Input Voltage: 220-240V AC, 50/60Hz
- Recommended Applications: Larger dining tables, open-plan areas, commercial settings



PENDANT LIGHT

Specifications:



- Type: Geometric single cube pendant
- Material: High-quality steel or iron construction with a durable plated finish
- Finish Options: Matte black, satin chrome, or brushed brass
- Shade Shape: Cubic (square profile)
- Lampholder: 1 × E27 (ES) ceramic lampholder
- Light Source: Accepts user-supplied LED or CFL globes (E27 base)
- Suspension: Adjustable cord/rod (length adjustable at installation)
- Canopy: Matching finish metal canopy included
- Input Voltage: 220-240V AC, 50/60Hz



- Type: Geometric triple cube pendant – linear configuration
- Material: High-quality steel or iron construction with a durable plated finish
- Finish Options: Matte black, satin chrome, or brushed brass
- Shade Shape: Cubic (square profile) – three cubes in a clean horizontal line
- Lampholder: 3 × E27 (ES) ceramic lampholders
- Canopy: Extended rectangular canopy (matching finish)
- Light Source: Accepts user-supplied LED or CFL globes (E27 base)
- Input Voltage: 220-240V AC, 50/60Hz



- Type: Geometric triple cube pendant – radial cluster
- Material: High-quality steel or iron construction with a durable plated finish
- Finish Options: Matte black, satin chrome, or brushed brass
- Shade Shape: Cubic (square profile) – three cubes arranged radially on a circular canopy
- Lampholder: 3 × E27 (ES) ceramic lampholders
- Canopy: Circular canopy (matching finish)
- Light Source: Accepts user-supplied LED or CFL globes (E27 base)
- Input Voltage: 220-240V AC, 50/60Hz



LED CEILING LAMP

8001-8076L



Email  info@fanucci.co.za



PENDANT LIGHT

Specifications:



- Type: Geometric single pyramid pendant
- Material: High-quality steel construction with durable powder-coated matte black finish
- Shade Shape: Pyramid (tapered, four-sided)
- Lampholder: 1 × E27 (ES) ceramic lampholder
- Light Source: Accepts user-supplied LED or CFL globes (E27 base)
- Suspension: Adjustable cord/rod (length adjustable at installation)



- Type: Geometric triple pyramid pendant – linear configuration
- Material: High-quality steel construction with durable powder-coated matte black finish
- Shade Shape: Pyramid (tapered, four-sided) – three pyramids in a clean horizontal line
- Lampholder: 3 × E27 (ES) ceramic lampholders
- Canopy: Extended rectangular canopy (matte black)
- Light Source: Accepts user-supplied LED or CFL globes (E27 base)



- Type: Geometric triple pyramid pendant – radial cluster
- Material: High-quality steel construction with durable powder-coated matte black finish
- Shade Shape: Pyramid (tapered, four-sided) – three pyramids arranged radially on a circular canopy
- Lampholder: 3 × E27 (ES) ceramic lampholders
- Canopy: Circular canopy (matte black)
- Light Source: Accepts user-supplied LED or CFL globes (E27 base)



PENDANT LIGHT

Specifications:



- Type: Minimalist single cylinder pendant
- Material: High-quality steel or iron construction with durable black painted finish
- Shade Shape: Open-bottom cylinder
- Lampholder: 1 × E27 (ES) ceramic lampholder



- Type: Minimalist triple cylinder pendant – linear configuration
- Material: High-quality steel or iron construction with durable black painted finish
- Shade Shape: Three open-bottom cylinders in a clean horizontal line
- Lampholder: 3 × E27 (ES) ceramic lampholders



- Type: Minimalist single cylinder pendant
- Material: High-quality steel or iron construction with durable black painted finish
- Shade Shape: Open-bottom cylinder
- Lampholder: 1 × E27 (ES) ceramic lampholder



- Type: Minimalist triple cylinder pendant – linear configuration
- Material: High-quality steel or iron construction with durable black painted finish
- Shade Shape: Three open-bottom cylinders in a clean horizontal line
- Lampholder: 3 × E27 (ES) ceramic lampholders



PENDANT LIGHT

Specifications:



- Type: Geometric single hexagon pendant
- Material: High-quality iron construction with durable black painted finish
- Shade Shape: Hexagonal prism (six-sided)
- Lampholder: 1 × E27 (ES) ceramic lampholder



- Type: Geometric triple hexagon pendant – linear configuration
- Material: High-quality iron construction with durable black painted finish
- Shade Shape: Three hexagonal prisms in a clean horizontal line
- Lampholder: 3 × E27 (ES) ceramic lampholders



- Type: Geometric single cube pendant
- Material: High-quality steel or iron construction with durable black painted finish
- Shade Shape: Cube (square profile, equal dimensions)
- Lampholder: 1 × E27 (ES) ceramic lampholder



- Type: Geometric triple cube pendant – linear configuration
- Material: High-quality steel or iron construction with durable black painted finish
- Shade Shape: Three cubes in a clean horizontal line
- Lampholder: 3 × E27 (ES) ceramic lampholders



LED CEILING LAMP

8001-T5145, 8001-88373 & 8001-70603



Email  info@fanucci.co.za



PENDANT LIGHT

Specifications:



- Type: Minimalist single metal pendant
- Material: High-quality iron construction with durable matte black powder-coated finish
- Lampholder: 1 × E27 (ES) ceramic lampholder



- Type: Minimalist triple metal pendant – linear configuration
- Material: High-quality iron construction with durable matte black powder-coated finish
- Lampholder: 3 × E27 (ES) ceramic lampholders



- Type: 5-light linear geometric pendant – honeycomb hexagonal frames
- Material: High-quality steel or iron construction with durable powder-coated matte black finish
- Finish: Matte black with subtle brass accents near the sockets
- Configuration: Five hexagonal open-cage frames in a linear cluster with staggered adjustable heights



- Type: Sculptural 3-light geometric cluster pendant
- Material: Powder-coated steel wire-frame construction
- Finish: Matte black
- Shapes: Three distinct wire-frame silhouettes – typically sphere, cone, and prism/cylinder (mismatched for eclectic effect)



PENDANT LIGHT

Specifications:



8140-2CH

- Dimensions: 320 × 320 mm (or Ø320 mm) × approx. H80 mm
- Light source: E27 sockets, 2 × max. 13W CFL (bulbs not included)
- Material & finish: Chrome-plated metal frame, white glass or acrylic shades, clear crystal accents



8140-3CH

- Dimensions: 420 × 420 mm (or Ø420 mm) × approx. H80 mm
- Light source: E27 sockets, 3 × max. 13W CFL (bulbs not included)
- Material & finish: Chrome-plated metal frame, white glass or acrylic shades, clear crystal accents



9297-3GD

- Dimensions: Approximately 450 × 450 mm × H240 mm
- Light source: E27 sockets, 3 × max. 13W CFL (bulbs not included)
- Material & finish: Gold-plated metal frame, white glass shades, clear crystal trim



76321B-3GD

- Dimensions: 450 × 450 mm × H240 mm
- Light source: E27 sockets, 3 × 13W CFL (bulbs not included)
- Material & finish: Gold-plated metal frame, white glass shades



PENDANT LIGHT

Specifications:



- Dimensions: Shade approx. Ø250 mm, overall height adjustable up to ~1000 mm
- Light source: E27 socket, max. 13W CFL (bulb not included)
- Material & finish: Chrome-plated metal, clear crystal or acrylic accents



- Dimensions: Shade approx. Ø300 mm, overall height adjustable up to ~1000 mm
- Light source: E27 socket, max. 13W CFL (bulb not included)
- Material & finish: Chrome-plated metal, clear glass or acrylic diffuser



- Dimensions: Shade approx. Ø250 mm, overall height adjustable up to ~1100 mm
- Light source: E27 socket, max. 13W CFL (bulb not included)
- Material & finish: Chrome-plated metal, clear crystal and glass detailing



- Dimensions: Shade approx. Ø350 mm, overall height adjustable up to ~1200 mm
- Light source: E27 socket, max. 13W CFL (bulb not included)
- Material & finish: Chrome-plated metal, clear acrylic or crystal embellishments



PENDANT LIGHT

Specifications:



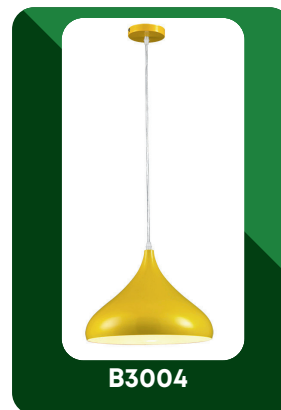
- Dimensions: Shade Ø250 mm, overall height adjustable 900–1200 mm
- Light source: E27 socket, max. 13W CFL (bulb not included)
- Material & finish: Chrome-plated metal, clear glass shade with crystal trim



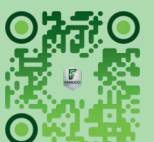
- Dimensions: Shade Ø250 mm, overall height adjustable 900–1200 mm
- Light source: E27 socket, max. 13W CFL (bulb not included)
- Material & finish: Chrome-plated metal, clear glass shade with crystal trim



- Dimensions: Shade Ø250 mm, overall height adjustable 900–1200 mm
- Light source: E27 socket, max. 13W CFL (bulb not included)
- Material & finish: Chrome-plated metal, clear glass shade with crystal trim



- Dimensions: Shade Ø250 mm, overall height adjustable 900–1200 mm
- Light source: E27 socket, max. 13W CFL (bulb not included)
- Material & finish: Chrome-plated metal, clear glass shade with crystal trim



PENDANT LIGHT

Specifications:



- Dimensions: Shade Ø250 mm, overall height adjustable 900–1200 mm
- Light source: E27 socket, max. 13W CFL (bulb not included)
- Material & finish: Chrome-plated metal, clear glass shade with crystal trim



- Dimensions: Shade Ø250 mm, overall height adjustable 900–1200 mm
- Light source: E27 socket, max. 13W CFL (bulb not included)
- Material & finish: Chrome-plated metal, clear glass shade with crystal trim



- Dimensions: Shade approx. Ø250–300 mm, overall height adjustable 900–1200 mm (or fixed height ~300 mm if flush)
- Light source: E27 socket, max. 13W CFL (bulb not included)
- Material & finish: Chrome-plated metal, white glass shade, optional clear crystal accents



- Dimensions: Shade approx. Ø200–250 mm, overall height adjustable 800–1000 mm (or wall projection ~250 mm)
- Light source: E27 or E14 socket, max. 13W CFL / LED compatible
- Material & finish: Satin nickel or chrome metal, clear or frosted glass shade



LED CEILING LAMP

Specifications:



F2130

- Dimensions: Ø600 mm × H170 mm
- Light source: LED 170W, 6000K, plus 4 × E14 sockets for 13W CFL each (bulbs not included)
- Material & finish: Metal base, crystal, glass, acrylic, built-in Bluetooth speaker



F2133

- Dimensions: Approximately Ø600 mm × H170 mm
- Light source: LED 170W, 6000K, and/or 4 × E14 sockets for CFL (bulb type may vary)
- Material & finish: Metal base in chrome or white, acrylic, crystal, and glass elements



F8806

- Dimensions: Ø500 mm × H100–120 mm
- Light source: E27 sockets, 5 × 13W CFL (bulbs not included) or LED equivalent
- Material & finish: Chrome-plated metal base, clear crystal strands, white acrylic or glass diffuser



F8809

- Dimensions: Ø550–600 mm × H150–200 mm
- Light source: E27 sockets, typically 6 × 13W CFL (bulbs not included) or integrated LED
- Material & finish: Polished chrome or gold metal, clear crystal tiers, white acrylic center



LED CEILING LAMP

Specifications:



6826MP3

- Dimensions: 780 × 580 mm × H240 mm
- Light source: 6 × E27 sockets, each max. 13W CFL (bulbs not included); may include integrated LED
- Material & finish: Polished chrome base, amber/white glass shades, clear acrylic accents, built-in MP3 player and remote control



90350

- Dimensions: Approximately 800 × 600 mm × H230 mm
- Light source: LED 220W (or equivalent), 6000K, plus optional E27 sockets depending on variant
- Material & finish: Metal base in chrome or white, clear/white glass, colourful acrylic elements



F2219

- Dimensions: 800 × 600 mm × H170 mm
- Light source: LED 200W, 6000K, plus 6 × E14 sockets for 13W CFL each (bulbs not included)
- Material & finish: Metal base, crystal, glass, acrylic accents, built-in Bluetooth speaker



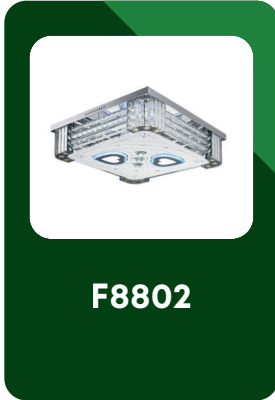
F8801

- Dimensions: Ø500 mm × H100–120 mm
- Light source: E27 sockets, 5 × 13W CFL (bulbs not included) or integrated LED
- Material & finish: Chrome-plated metal base, clear crystal strands, white acrylic or glass diffuser



LED CEILING LAMP

Specifications:



F8802

- Dimensions: Ø450 mm × H100–120 mm
- Light source: E27 sockets, 4×13W CFL (bulbs not included) or integrated LED equivalent
- Material & finish: Chrome-plated metal base, clear crystal strands, white acrylic or glass diffuser



F8803

- Dimensions: Ø400 mm × H90–110 mm
- Light source: E27 sockets, 3×13W CFL (bulbs not included)
- Material & finish: Polished chrome metal, clear crystal accents, white acrylic centre diffuser



F8808

- Dimensions: Ø600 mm × H150–200 mm
- Light source: E27 sockets, 6×13W CFL (bulbs not included)
- Material & finish: Chrome or satin nickel metal frame, multiple tiers of clear crystal strands, white glass diffuser



F90336ABT

- Dimensions: Ø450 mm × H200–250 mm (adjustable height if pendant)
- Light source: E27 sockets, 3×13W CFL (bulbs not included) or integrated LED panel
- Material & finish: Chrome-plated metal, clear crystal elements, white glass or acrylic diffuser



CEILING LAMP

Specifications:



JW-001-3C-WH

- Dimensions: 415 × 415 mm × H100 mm (square)
- Light source: E27 sockets, 3 × 13W CFL (bulbs not included)
- Material & finish: White metal base, frosted glass shade



JW-002-3C-WDA

- Dimensions: Ø410 mm × H80 mm
- Light source: E27 sockets, 3 × 13W CFL (bulbs not included)
- Material & finish: Metal base in light wood colour, white glass shade



JW-002-3C-WDB

- Dimensions: Ø410 mm × H80 mm
- Light source: E27 sockets, 3 × 13W CFL (bulbs not included)
- Material & finish: Metal base in dark wood colour, white glass shade



JW-003-3C-CHA

- Dimensions: Ø410 mm × H80 mm
- Light source: E27 sockets, 3 × 13W CFL (bulbs not included)
- Material & finish: Chrome-plated metal base, white glass shade



CEILING LAMP

Specifications:



ASA01S-2C

- Dimensions: 330 × 330 mm × H90 mm
- Light source: E27 sockets, 2 × 13W CFL (bulbs not included)
- Material & finish: Metal base, white glass, silver glass accents



ASA02L-3C

- Dimensions: 430 × 430 mm × H120 mm
- Light source: E27 sockets, 3 × 13W CFL (bulbs not included)
- Material & finish: Metal base, white frosted glass, silver glass accents



ASA03L-3C

- Dimensions: 430 × 430 mm × H120 mm
- Light source: E27 sockets, 3 × 13W CFL (bulbs not included)
- Material & finish: Iron base, white frosted glass, silver glass accents



ASA03S-2C

- Dimensions: 330 × 330 mm × H90 mm
- Light source: E27 sockets, 2 × 13W CFL (bulbs not included)
- Material & finish: Metal base, white glass, silver glass accents



CEILING LAMP

Specifications:



ASA01L-3C

- Dimensions: 430 × 430 mm × H120 mm
- Light source: E27 sockets, 3 × 13W CFL (bulbs not included)
- Material & finish: Metal base, white frosted glass, silver glass accents



ASA04S-2C

- Dimensions: Ø315 mm × H80 mm
- Light source: E27 sockets, 2 × 13W CFL (bulbs not included)
- Material & finish: White metal base, white glass shade, silver mirror accents



ASA05S-2C

- Dimensions: Ø315 mm × H80 mm
- Light source: E27 sockets, 2 × 13W CFL (bulbs not included)
- Material & finish: White metal base, white glass shade, silver mirror accents



ASA06S-2C

- Dimensions: Ø315 mm × H80 mm
- Light source: E27 sockets, 2 × 13W CFL (bulbs not included)
- Material & finish: White metal base, white glass shade, silver mirror accents



CEILING LAMP

Specifications:



ASA076

- Dimensions: D430mm * H100mm
- Light Source: E27 sockets, 3 x 13W CFL (bulbs not included)
- Material & Finish: Chrome metal base with clear acrylic and silver/frosted glass



ASA077

- Dimensions: D430mm * H100mm
- Light Source: E27 sockets, 3 x 13W CFL (bulbs not included)
- Material & Finish: Chrome metal base with clear acrylic and silver/frosted glass (aesthetic variant of ASA076)



YB1001

- Dimensions: D300mm * H80mm
- Light Source: E27 sockets, 2 x 13W CFL (bulbs not included) or LED 12W 6500K (integrated)
- Material & Finish: White metal base with white glass shade and clear crystal accents



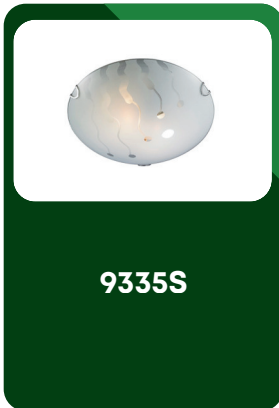
YB1002

- Dimensions: D300mm * H80mm
- Light Source: E27 sockets, 2 x 13W CFL (bulbs not included) or LED 12W 6500K (integrated)
- Material & Finish: White metal base with white glass shade and clear acrylic diffuser



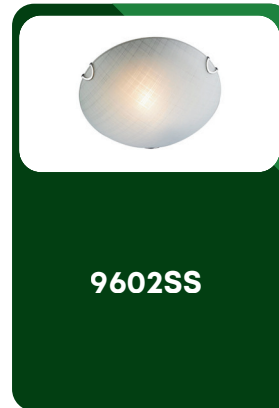
CEILING LAMP

Specifications:



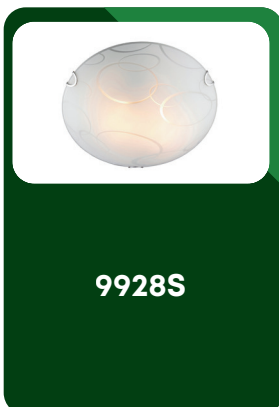
9335S

- Dimensions: Approximately $\text{Ø}310 \text{ mm} \times \text{H}90 \text{ mm}$ (round)
- Light source: E27 sockets, 3 \times 13W CFL (bulbs not included)
- Material & finish: White metal base, white glass shade, clear crystal trim



9602SS

- Dimensions: Approximately $\text{Ø}350 \text{ mm} \times \text{H}100 \text{ mm}$ (round)
- Light source: E27 sockets, 3 \times 13W CFL (bulbs not included) or integrated LED option
- Material & finish: Stainless steel or chrome metal base, white acrylic diffuser with crystal accents



9928S

- Dimensions: Approximately $\text{Ø}300 \text{ mm} \times \text{H}80 \text{ mm}$ (round)
- Light source: E27 sockets, 2 \times 13W CFL (bulbs not included)
- Material & finish: White metal base, frosted glass shade, subtle chrome detailing

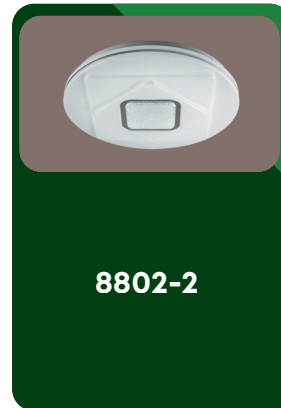


CEILING LAMP

Specifications:



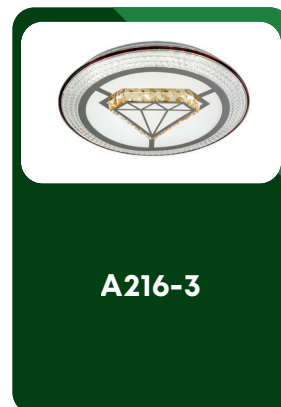
- Dimensions: Cut-out approx. Ø90 mm, overall height ~65 mm
- Light source: MR16 / GU10 socket, max. 50W halogen or LED equivalent (bulb not included)
- Material & finish: Aluminum or zinc alloy trim in chrome or white finish, clear glass lens



- Dimensions: Approximately 350 × 350 mm (square) × H90 mm
- Light source: E27 sockets, 2 × 13W CFL (bulbs not included)
- Material & finish: Chrome or white metal base, white acrylic or glass diffuser



- Dimensions: Ø500 mm × H100 mm
- Light source: LED 96W, 6000K (integrated)
- Material & finish: Metal base, clear crystal accents, white/clear acrylic diffuser



- Dimensions: Ø500 mm × H100 mm
- Light source: LED 96W, 6000K (integrated)
- Material & finish: Metal base, clear crystal accents, white/clear acrylic diffuser



CEILING LAMP

Specifications:



A367

- Dimensions: D400mm * H100mm
- Light Source: LED 27W * 2, 6000K
- Material & Finish: Metal base with white acrylic



SC004L

- Dimensions: D420mm * H80mm
- Light Source: E27 sockets, 3 x 13W CFL
- Material & Finish: Chrome metal base, white glass, clear crystal



SC004M

- Dimensions: D320mm * H80mm
- Light Source: E27 sockets, 2 x 13W CFL
- Material & Finish: Chrome metal base, white glass, clear crystal



SC091M

- Dimensions: 315mm * 315mm * H80mm
- Light Source: E27 sockets, 2 x 13W CFL
- Material & Finish: White/clear glass with clear crystal



CEILING LAMP

Specifications:



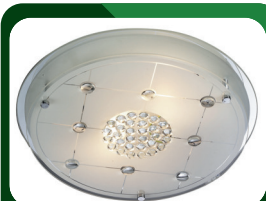
SC092M

- Dimensions: 315 × 315 mm × H80 mm
- Light source: E27 sockets, 2 × 13W CFL (bulbs not included)
- Material & finish: White/clear glass with clear crystal accents



SC093M

- Dimensions: 315 × 315 mm × H80 mm
- Light source: E27 sockets, 2 × 13W CFL (bulbs not included)
- Material & finish: White/clear glass with clear crystal accents (variant design)



SC906R-L

- Dimensions: Ø420 mm × H80 mm (3-light version)
- Light source: E27 sockets, 3 × 13W CFL (bulbs not included)
- Material & finish: Chrome metal base, white glass, clear crystal



SC906S-M

- Dimensions: 390 × 390 mm × H70 mm (3-light version)
- Light source: E27 sockets, 3 × 13W CFL (bulbs not included)
- Material & finish: Chrome metal base, white glass, clear crystal



LED PENDANT LIGHT

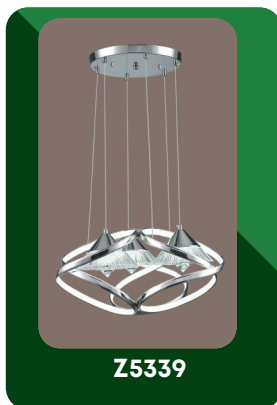
Specifications:



- Dimensions: Shade approx. Ø300 mm, overall height adjustable 800–1100 mm
- Light source: E27 socket, max. 13W CFL (bulb not included)
- Material & finish: Chrome-plated metal, clear glass or acrylic shade with crystal accents



- Dimensions: Ø450 mm × H1000 mm
- Light source: LED 100W, 6500K (integrated)
- Material & finish: Metal plated chrome, aluminum plated chrome, white/clear acrylic diffuser



- Dimensions: Ø460 mm × H1000 mm
- Light source: LED 120W, 6500K (integrated)
- Material & finish: Metal plated chrome, aluminum plated chrome, clear/white acrylic diffuser

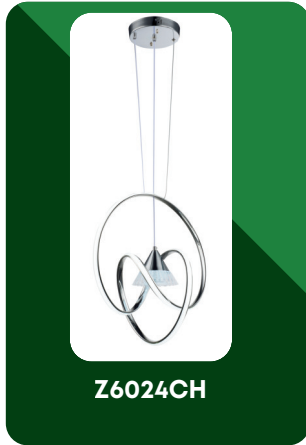


- Dimensions: Shade approx. Ø300 mm, overall height adjustable up to 1000 mm
- Light source: E27 socket, max. 13W CFL (bulb not included)
- Material & finish: Chrome-plated metal, clear glass or acrylic with crystal detailing



LED PENDANT LIGHT

Specifications:



- Dimensions: Shade approx. Ø350 mm, overall height adjustable up to 1200 mm
- Light source: E27 socket, max. 13W CFL (bulb not included)
- Material & finish: Chrome-plated metal, clear crystal embellishments, glass or acrylic diffuser



- Dimensions: Shade approx. Ø400 mm, overall height adjustable 900–1100 mm (if pendant)
- Light source: E27 socket, max. 13W CFL (bulb not included) or integrated LED option
- Material & finish: Chrome or satin nickel metal, clear glass shade with crystal accents



OUTDOOR LAMP

Specifications:



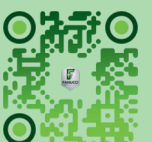
JK1007S-BK

- Dimensions: W165×D200×H370 mm
- Light source: E27 socket, 1×13W CFL (bulb not included)
- Material & finish: Satin black aluminum body with clear glass shade



LJ002WU

- Dimensions: 350×135×350 mm (W×D×H)
- Light source: E27 socket, 1×13W CFL (bulb not included)
- Material & finish: Stainless steel housing with clear acrylic shade



FANUCCI

THANK YOU FOR BROWSING

OPERATING HOURS

MON-FRI
08AM-05PM

SAT-SUN
CLOSED

CONTACT INFORMATION



Phone

(010) 109 7869



Email

info@fanucci.co.za



Location

5 Cedar Rd
Anchorville, Lenasia, 1829

